



# **Health and Wellbeing Board – Your Life, Your Wellbeing Transformation Programme**

14<sup>th</sup> June 2017





# Programme Summary



Promoting Wellbeing	Promoting Independence	Supporting Independence
<p><i>Preventing people from entering formal health and social care systems.</i></p> <p><b><u>Projects</u></b></p> <p><b>Core Offer / Care Navigators</b> – commissioning the Voluntary and Community sector to provide a consistent capacity and capability of preventative support and a team of Care Navigators to promote and enable access.</p> <p><b>Front Door / Triage</b> – developing the initial point of contact, triage and assessment to maximise the appropriate use of preventative services and minimise inappropriate social care provision.</p> <p><b>Digital Offer</b> – designing a digital capability which enables service users and staff to better navigate the health and social care system, in particular the network of Voluntary and Community sector support.</p>	<p><i>Short term support, providing the best long term outcome for people.</i></p> <p><b><u>Projects</u></b></p> <p><b>Integrated Rehabilitation</b> – optimising the use of professional skill sets and minimising duplication across Intermediate Care and Enablement (KEaH) to create the most effective service.</p> <p><b>Urgent Care</b> – further developing the referral route out of hospital into Integrated Rehabilitation, to ensure rapid discharge and the best long term outcome for people.</p> <p><b>Dementia Enablement</b> – exploring the opportunity in better supporting people living with dementia to maximise their independence.</p>	<p><i>Ongoing support, maintaining wellbeing and self-sufficiency, avoiding unnecessary hospital stays.</i></p> <p><b><u>Projects</u></b></p> <p><b>Outcomes Based Homecare</b> – developing a model of professionally-led, outcomes – focussed homecare which continues to promote the independence of people with ongoing need by supporting them to work towards goals.</p> <p><b>SIS / Homecare</b> – designing the commissioning framework for all of KCC's community support, including the new model of Outcomes Based Homecare.</p>

# This is making a significant contribution to Local Care



Supporting people to be healthy and independent

1 Care and support planning with care navigation and case management

Pilot  
Supporting Independence: Outcomes Based Homecare



2 Self-care and management

Promoting Wellbeing: Core offer, digital offer / self assessment



3 Healthy living environment

Promoting Wellbeing: Core offer



4 Integrated health and social care into or coordinated close to the home

Supporting Independence: Outcomes Based Homecare



Coordinated care for people who need it

5 Single point of access

Promoting Wellbeing: Front door / triage



6 Rapid Response

Promoting Independence: Urgent Care, Integrated Rehab



7 Discharge planning and reablement

Promoting Independence: Integrated Rehab



Supporting services

8 Access to expert opinion and timely access to diagnostics

N/A



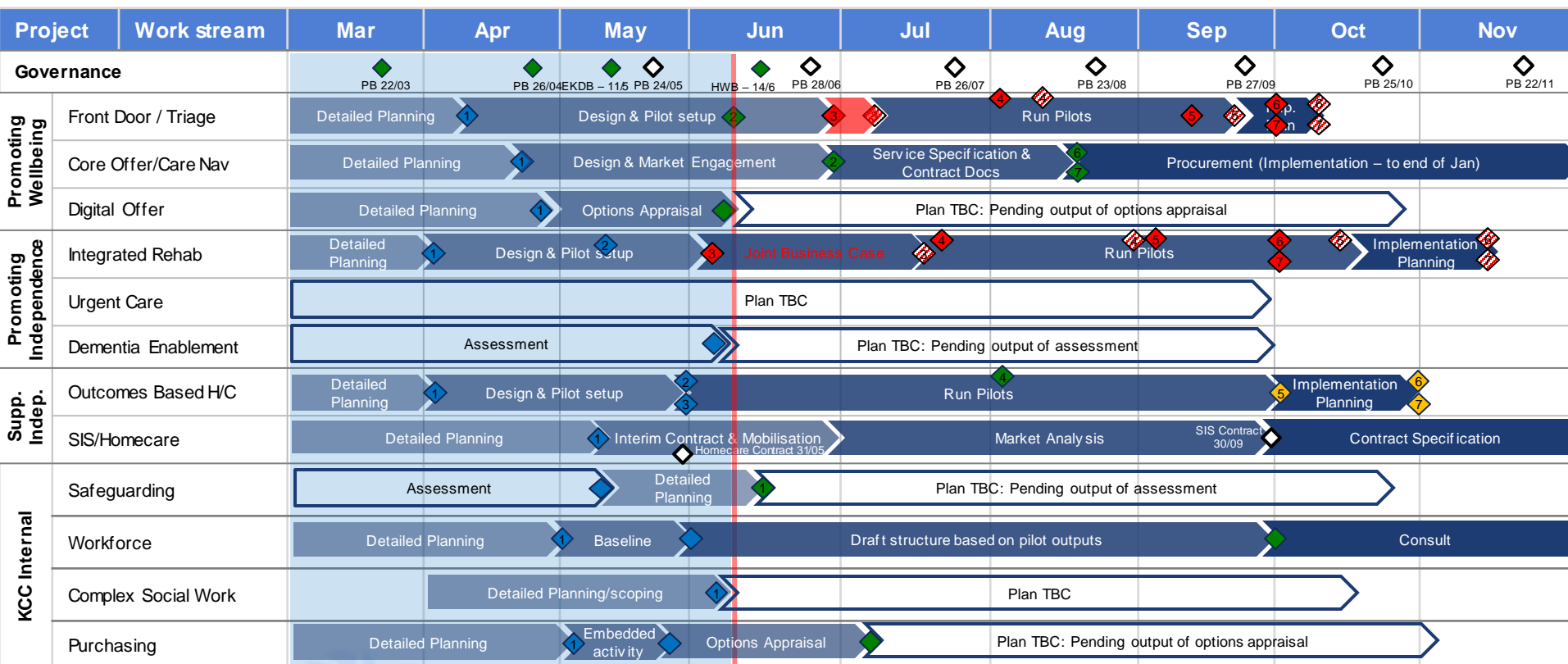
# Programme Status



	Project	Stage	RAG	Comments
Promoting Wellbeing	Front Door / Triage	Design	Yellow	Pilot delayed by 1 week to 10/07 due to there being additional time required to prepare provider
	Core Offer / Care Navigators	Design	Green	Contract is on track to begin procurement in mid-August, following Public Consultation
	Digital Offer	Design	Green	Options appraisal completed on 07/07 with next steps to be confirmed
Promoting Independence	Integrated Rehab	Design	Yellow	Joint Programme Board established between KCC and KCHFT to oversee the development of a Joint Business Case. This has delayed the start of the pilot
	Urgent Care	Planning	Yellow	Resource now in place, plan is being developed
	Dementia Enablement	Planning	Green	The assessment was completed on 02/06, a plan is now being developed to take the findings forward into Design
Supporting Indep.	Outcomes Based Homecare	Design	Green	Pilot with 100 Service Users began on 05/06 in the Whitstable area, working with 121 care, supported by Health colleagues from Encompass
	SIS/Homecare	Planning	Yellow	Team is now fully resourced, plan is being developed
KCC Internal	Safeguarding	Planning	Green	The assessment was completed in May, a plan is now being developed to take the findings forward into Design
	Workforce	Design	Green	KCC's new workforce is being designed based on the outcome of the pathway design – this is on track
	Complex Social Work	Planning	Yellow	Resource now in place, plan is being developed
	Purchasing	Design	Green	A new model for KCC purchasing is being developed to support the new pathway – this is on track

# Programme Status

Fixed Date 
 On Track Milestone 
 At Risk Milestone 
 Slipped Milestone 
 Completed Milestone



Type	Description	L	I	Impact Description	Action Plan
Risk	Successful completion of pilots requires significant commitment of operational resources from all partners. This may not be secured due to operational pressures	3	5	The OBHC and Integrated Rehab pilots will be most significantly impacted – the full future model will not be able to be tested, lowering confidence and quality of final solution.	1. Identify and raise resource requirements early to give maximum time to agree, backfill and mobilise 2. Ensure appropriate governance to enable escalation of requirements
Risk	Developing a model to be implemented county-wide requires awareness and strategic engagement from partners. This may not be achieved given the number of partners and the pace of progress.	2	5	Design and implementation will be delayed or the models compromised without the right input from all partners.	1. Ensure and make use of appropriate governance to communicate details of the model and progress in design 2. Develop a communication and engagement plan for areas not involved in design

# Whole System Engagement



To effectively engage all partners, KCC are making use of existing forums. As well as the Health and Wellbeing Board, updates on the programme are regularly given in the following:

- East Kent Delivery Board – the majority of Pilot activity is located in East Kent, this board oversees the progress of design and it's contribution to Local Care
- Kent Integration Pioneers Implementation Group – the programme gives a monthly update, including deep dives into specific areas (for example, 12/06 is focussed on Integrated Rehabilitation) and seeks to ensure design is aligned with other local activity

The programme is also working with the STP Local Care Working Group, and in April took part in a 'deep dive' to explore the alignment between the Your Life, Your Wellbeing Programme and Local Care.

Senior KCC staff are kept well informed of the programme scope and progress and are able to identify links, raise concerns and answer queries in other joint forums.